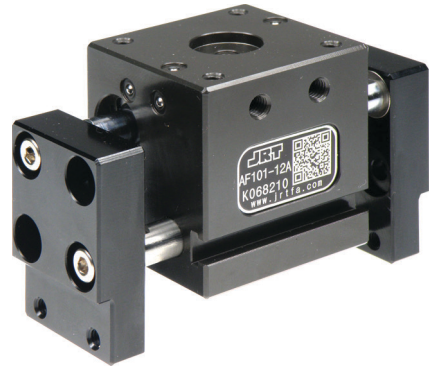


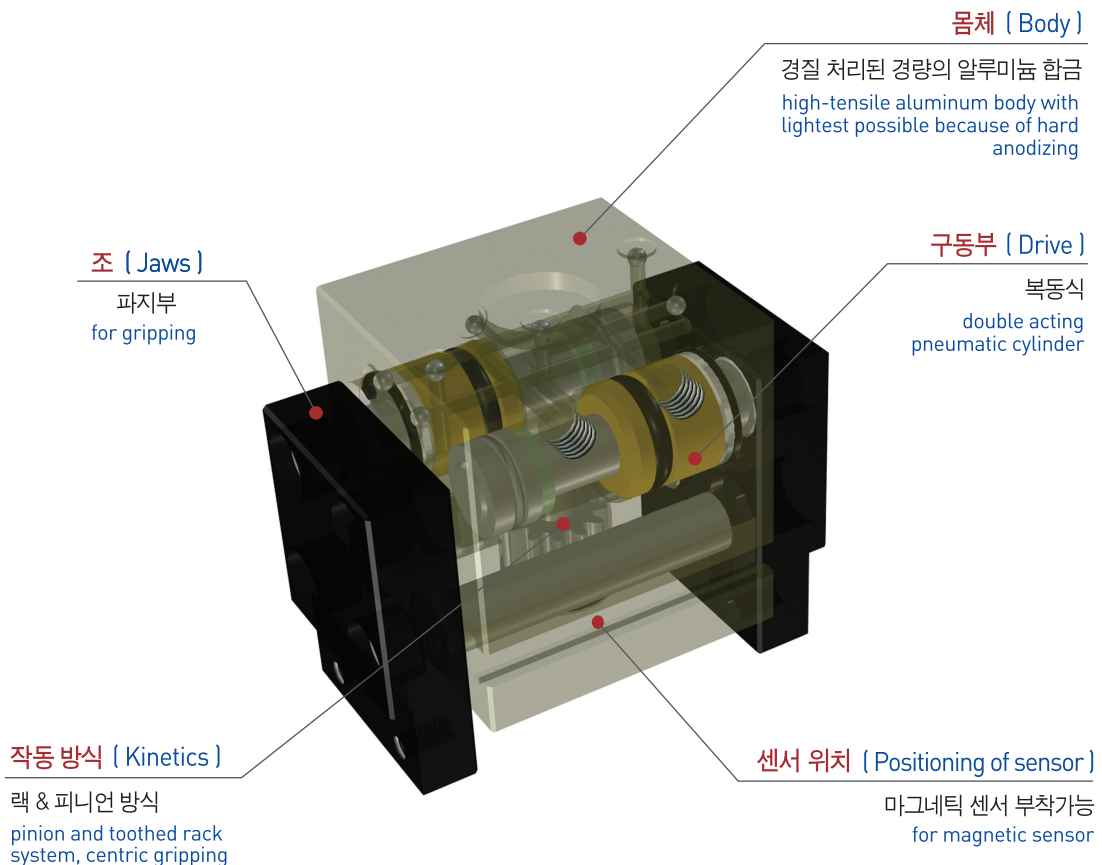


특징 (Character)

- 랙 & 피니언에 의한 평행 개폐 방식
Parallel Open-Close type of Rack & pinion
- 두 개의 실린더 내장형으로 강력한 파지력
High gripping forces by the structure of synchronized dual piston
- 개폐검출 확인용 센서 부착가능
Magnetic sensor is available for open-close sensing
- AF101-10N은 AF101-10과 동일한 치수에 센서부착형 제품임.
AF101-10N is same dimension as AF101-10 and attaching sensor type

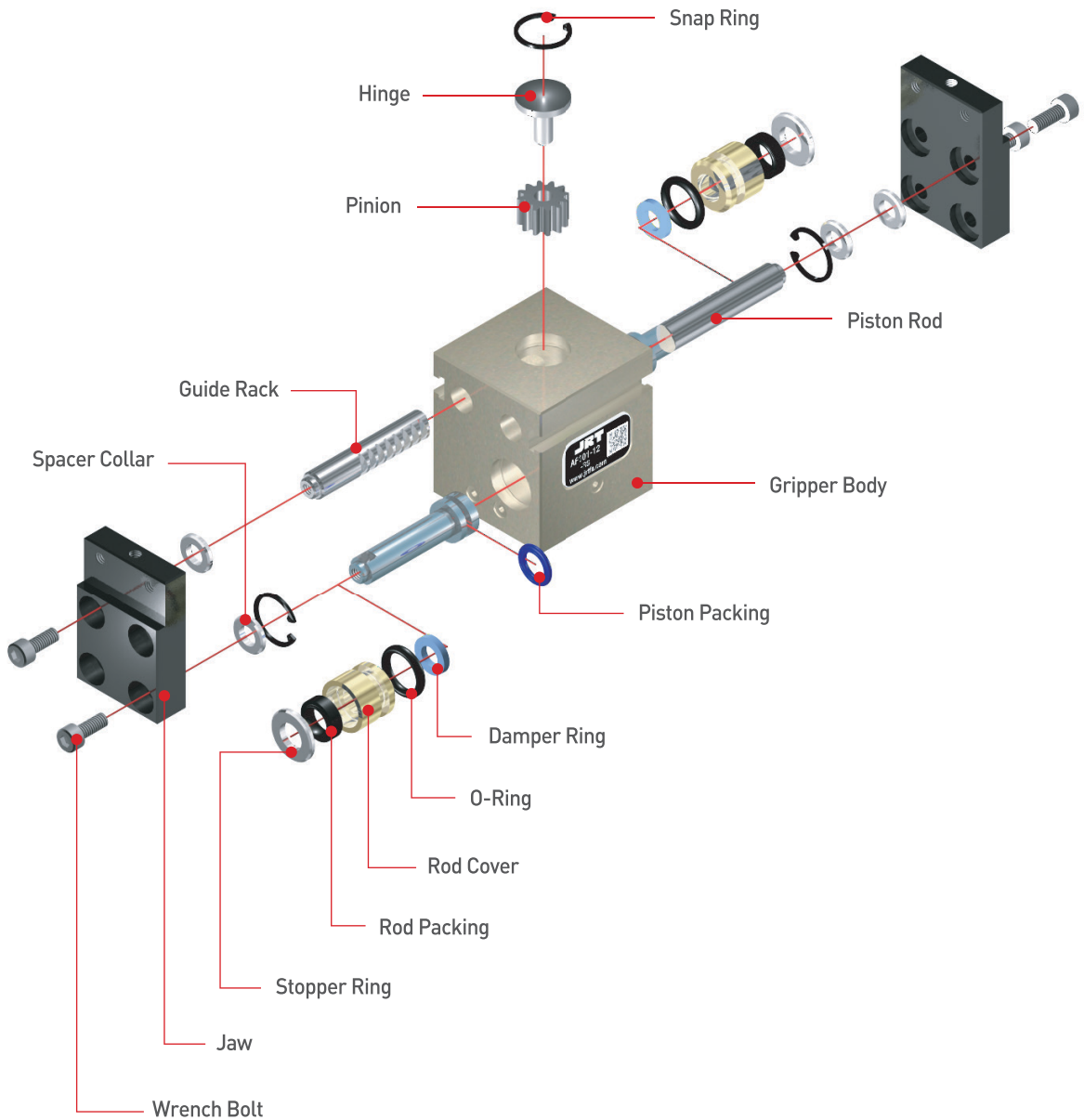


랙 & 피니언 방식 (Rack & Pinion type)



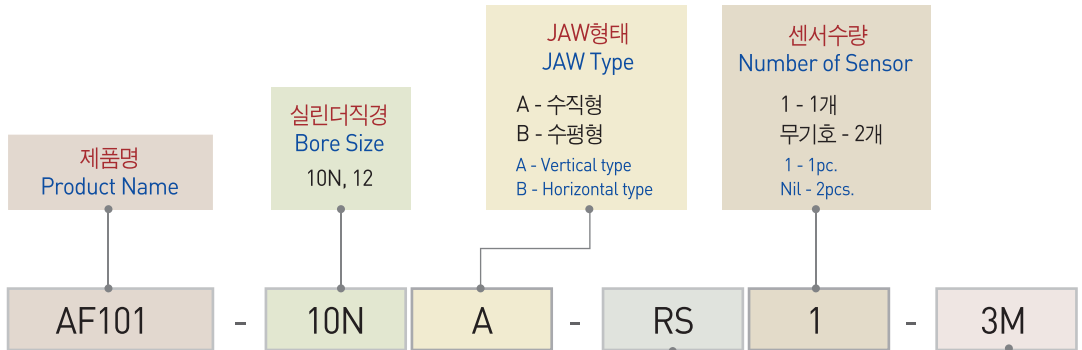
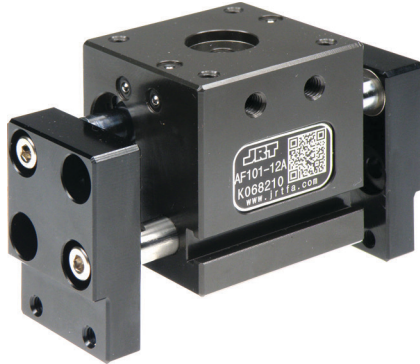
부품분해도 (Exploded view)

※ 본 분해도는 한 제품을 예시하였으므로 기종별로 차이가 있을 수 있습니다.
 ※ This is exploded view illustrates a certain product only. The contents may vary by product models.



- AF101
- AF02
- AF03
- AF04P
- AF105P
- AF06
- AF10
- AF13
- AF13C
- AF14
- AF15
- AF316
- AF17
- AF117
- AF19
- AF24
- AF26
- AF28D
- AF30
- AF30L
- AF30SP
- AF40
- AF46
- AF56N
- RAF56N
- MF16

주문기호 (Ordering Code)



센서명칭
Sensor Type

무기호 - 센서 및 관련부품을 제공하지 않습니다.
RS(기존방식) 기입시, 본사에서 적합한 임의의 센서를 선정하여 부착해 드립니다.

* 제품에 부착 가능한 센서 규격 및 주문기호는 센서 상세 페이지를 참조 바랍니다.

Nil - Sensor and relevant components are not supplied.
When entering RS(existing method), our Head Office will attach a suitable sensor selected at its option.

* For the specification of sensor attachable to the product and the sensor order code, refer to details of sensor part.

센서 선 길이
Sensor Cable Length

무기호 - 1m
3M - 3m
5M - 5m
Q□ - 커넥터 사용

* 커넥터 사양 및 가능여부는 센서 상세 페이지를 참조 바랍니다.

Nil - 1m
3M - 3m
5M - 5m
Q - Quick connector

* For the specification of connector and availability, refer to details of sensor part.

☐ 제품사양 (Specification)

P=공기압력(bar) , L=작용점까지의 거리(mm)
P=Air Pressure(bar) , L=Exertion length(mm)

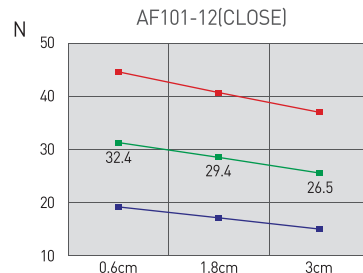
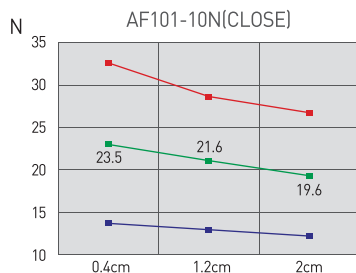
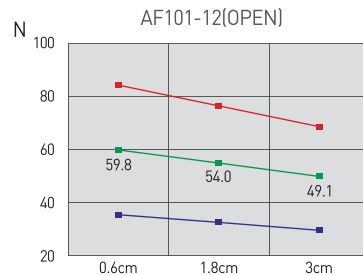
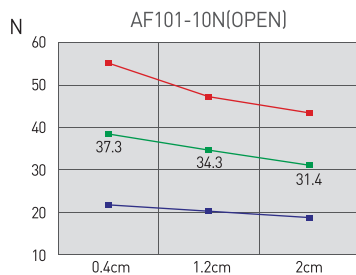
제품명칭 Products Name	AF101-10N	AF101-12	단위 Unit
개폐범위 Stroke	6	20	mm
제품중량 Weight	0.14	0.29	kg
최대치구길이 Max. length attach	20	30	mm
배관접속구 Fitting size	M5	M5	
파지력 : 열림시 Gripping force : Open	7.85P/(1+0.013L)	12.75P/(1+0.01L)	N
파지력 : 닫힘시 Gripping force : Close	4.91P/(1+0.013L)	6.86P/(1+0.01L)	N
1사이클당 공기소모량 Air consumption per cycle	0.8	3.5	cm ³
닫힘시/열림시 시간 Closing / Opening time	0.01/0.01		sec
반복정밀도 Repeat accuracy	0.1		mm
연속사용회수 Continuation usage amount	60		cpm
사용압력 Operating pressure	3~7		bar
주위온도 Ambient temperature	-5 to 60		°C
윤활 Lubrication	불필요 Needless		

AF101
AF02
AF03
AF04P
AF105P
AF06
AF10
AF13
AF13C
AF14
AF15
AF316
AF17
AF117
AF19
AF24
AF26
AF28D
AF30
AF30L
AF30SP
AF40
AF46
AF56N
RAF56N
MF16

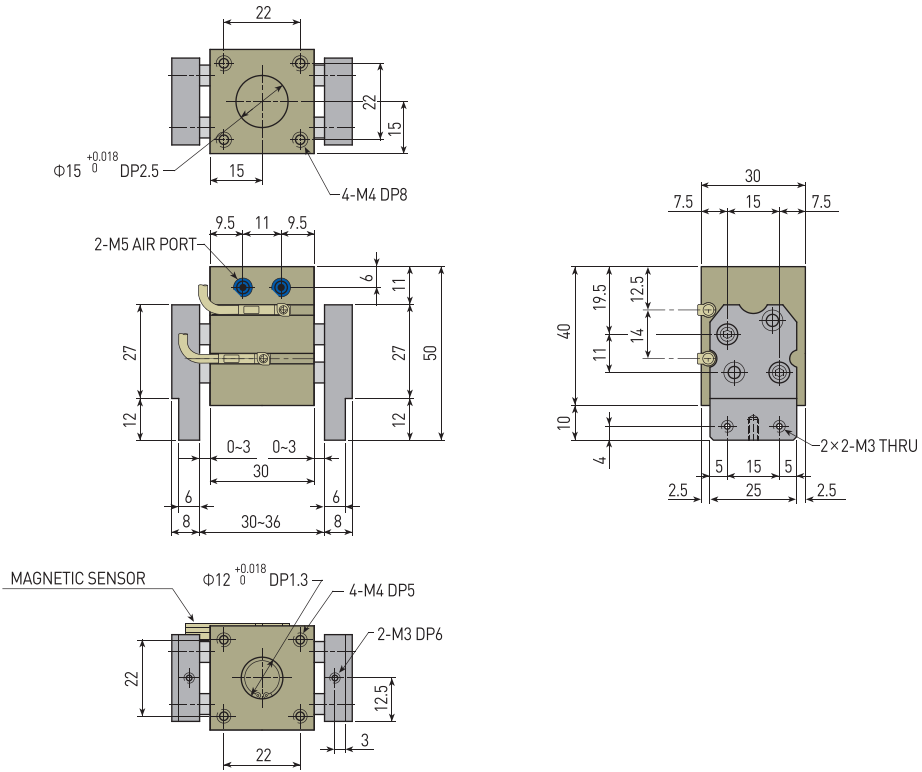
반복정밀도 : 연속 100회 작동후 측정치
After 100 consecutive strokes to end positions

☐ 작용점에서의 파지력 (Gripping Force From a Point of Action)

범례 (Legend) : —■ 7[bar] —■ 5[bar] —■ 3[bar]



AF101-10NA



AF101-10NB

